



Dedicated to supporting
Montgomery Elementary School's
pursuit of excellence in education
through strategic investment in educational
enhancements and capital improvements

Dear Montgomery Elementary School Family,

The Mustang Fund has great plans to improve our school in 2018-2019, but we need your help!

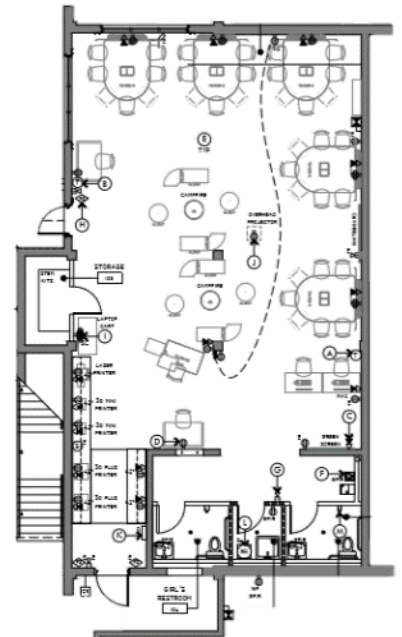
The Mustang Fund is a not-for-profit foundation run by parents and families of Montgomery students—with help and support from teachers and the school administration—that raises funds to directly fund programs, facility enhancements, or projects aimed at improving our school. The vast majority of these initiatives are outside of traditional school funding provided by DeKalb County and would not otherwise be implemented at Montgomery.

Over the past few years, we have supported many projects critical to our school's continued success. This includes funding the training of our teachers in the Orton-Gillingham approach, establishing our science lab and constructing our new state-of-the-art playground. Support for our teachers remains crucial to our school's success and the Mustang Fund has supplied grants for: Science Olympiad, STAR reading supplemental materials, Math Club and classroom literacy centers, flexible seating in classrooms, library enhancements, and STEAM materials and supplies. We even recently provided funds to start a "Girls Who Code" club at the school (after an impressive pitch to the Mustang Fund by the founding student members of the club)!

Each year, in addition to the other important projects the Mustang Fund supports, we select one initiative to be the focus of our fundraising efforts. This year's Annual Appeal Campaign is the Innovation Lab 2.0! We will be transforming 1,800+ square feet of unused space in the school's basement into a state-of-the-art technology and maker space (final architectural plans are displayed on the right). This will represent the completion of the work performed last year during the first phase (Innovation Lab 1.0), in which a classroom was developed into a flexible, aesthetically-pleasing learning space with various types of technology equipment. The Innovation Lab 2.0 space will provide additional technology assets, including 3D-printers, robot "kits," and other equipment aimed at enhancing Montgomery's technology and STEAM capabilities.

To fund the renovation of the space, purchase the furniture and technology equipment, and provide staff training, we have set a fundraising goal of \$60,000.

If you have not already given to the fund this year or would like to make a tax-deductible gift, then please consider donating to this important cause. We ask for every Montgomery family to participate—no matter the donation level.



You may either donate via our website www.mustangfundinc.com or send a check to the address shown below. As you consider making your tax deductible gift, please remember corporate matching increases your impact. We will also send everyone that donates \$50 or more a car magnet so you can show your support of the Fund and Montgomery!

Thank you for donating to the Mustang Fund. Together we can make a huge impact on the trajectory of our school and the educational success of our children.

Sincerely,

Matt Ritchey
Mustang Fund President and father of Hudson, a 3rd grader at Montgomery



Dedicated to supporting
Montgomery Elementary School's
pursuit of excellence in education
through strategic investment in educational
enhancements and capital improvements

Mustang Fund, Inc. Board of Directors 2018-2019

President: Matt Ritchey	Teacher of the Year: Emily Backus
Vice President: Mike Williams	Teacher Representative: Sherrill Weihe
Secretary: Donna Urbano	At-Large: Derick Corbett
Treasurer: Carl Cassidy	At-Large: Craig Hoover
Business Partners: Zach Polun	At-Large: James Mei
Family Outreach: Daniel Sineway	At-Large: Scott Raven
Principal: Lori Bolds	At-Large: Cliff Robinson
PTA President: Chau Clamp	

MES IGNITE!



Providing the tools to support technology, arts and STEM-related education for all Montgomery students.